



SPECIFICATIONS

AUTOMATIC AIRSPRAY GUN model A 25 - A 26

Manual : 0407 573.061.212

Date : 19/07/04

Supersede :

Modif. :

ADDITIONAL DOCUMENTATIONS

SPARE PARTS :	GUN, model A 25	Doc. 573.083.050
	GUN, model A 25 LP	Doc. 573.084.050
	GUN, model A 25 HTi	Doc. 573.315.050
	GUN, model A 26 HTi	Doc. 573.316.050

KREMLIN REXSON – Site de Stains : 150, avenue de Stalingrad
93 245 - STAINS CEDEX - FRANCE
Téléphone : 33 (0)1 49 40 25 25 Fax : 33 (0)1 48 26 07 16



SPECIFICATIONS
AUTOMATIC AIRSPRAY GUN
model A 25, A 25 LP, A 25 HTi, A 26 HTi

1. TECHNICAL FEATURES

The A 25, A 25 LP, A 25 HTi and A 26 HTi guns are designed for applying paints, primers and adhesives in automatic installations. They can be fitted on fixed supports, automatic machines or on robots.

The fitting on the guns using a modular base allows rapid interchangeability, which in turn leads to much reduced down time. Removal and replacement of the gun can be carried out without removing any hoses.

FEATURES	A 25	A 25 LP	A 25 HTi	A 26 HTi
Model	conventionnal	Low pressure	Very low pressure	Very low pressure
Air feed pressure to the gun	Maximum 6 bar / 87 psi			
Atomizing air pressure (base)	Maximum 6 bar / 87 psi		Maximum 4 bar / 58 psi	
Atomizing air pressure at the aircap	-	-	0,7 bar / 10 psi	
Command air pressure	Minimum 3 bar / 43 psi			
Fluid pressure	Maximum 6 bar / 87 psi			
Fluid output	Dependent upon type of nozzle in use			
Air consumption	29 m3/h maxi	22 m3/h maxi	28 m3/h maxi	28 m3/h maxi
Operating temperature	Maximum 50°C / 122° F			
Weight of gun alone	700 g / 25 oz			
Weight of gun + base	1010 g / 36 oz			
Materials in contact with the product	Stainless steel, treated stainless steel			

▪ **FITTINGS**

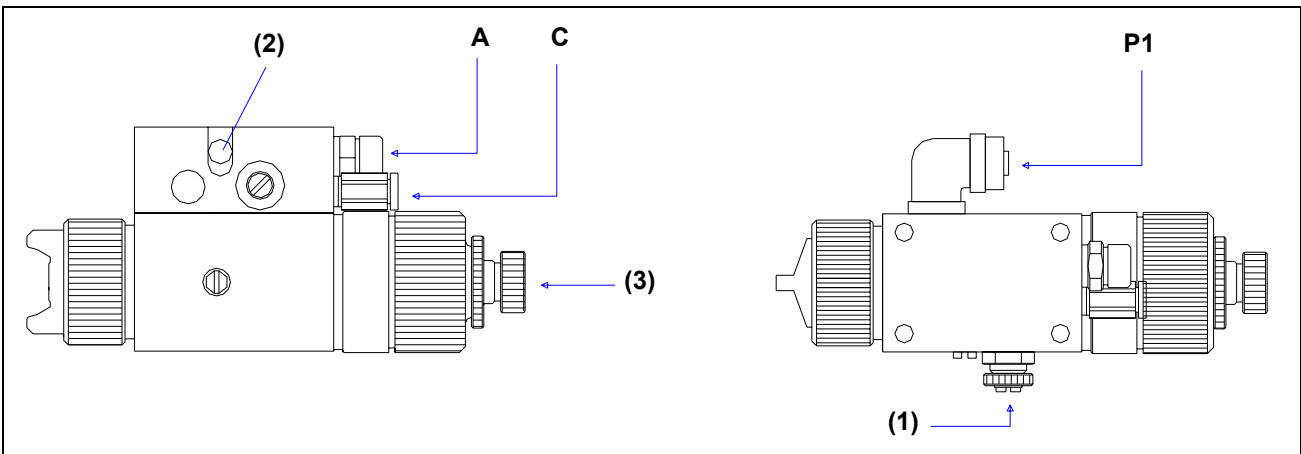
Indexes	Filetages (embase)	Fittings (base)	Hoses
Fluid (P 1)	F 1/4 NPS	Quick fit (elbow)	Fluid hose Ø 6x8
Fluid (P 2)	F 1/4 NPS	Quick fit (elbow) or plug	Fluid hose Ø 6x8
Command air (C)	F 1/8 NPS	Quick fit	Polyamide hose Ø 4x6
Spraying air (A)	F 1/4 NPS	M 1/4 NPS	Conductive air hose : A 25 : minimum 7 mm ID A 25 LP, A 25 HTi, A 26 HTi : minimum 8 mm ID (for a 7.5 m length)

(1)	Fan adjustment	→ fan width adjustment
(2)	Gun mounting pin	support : rod Ø 16 / 5/8", length 100 mm / 4"
(3)	Adjustment knob	→ fluid output adjustment

On the modular base, you can fit :

- either 2 product fittings → product circulation
- or 1 product fitting and a plug

Fixing the gun onto its base : 4 M 6 x 50 screws.

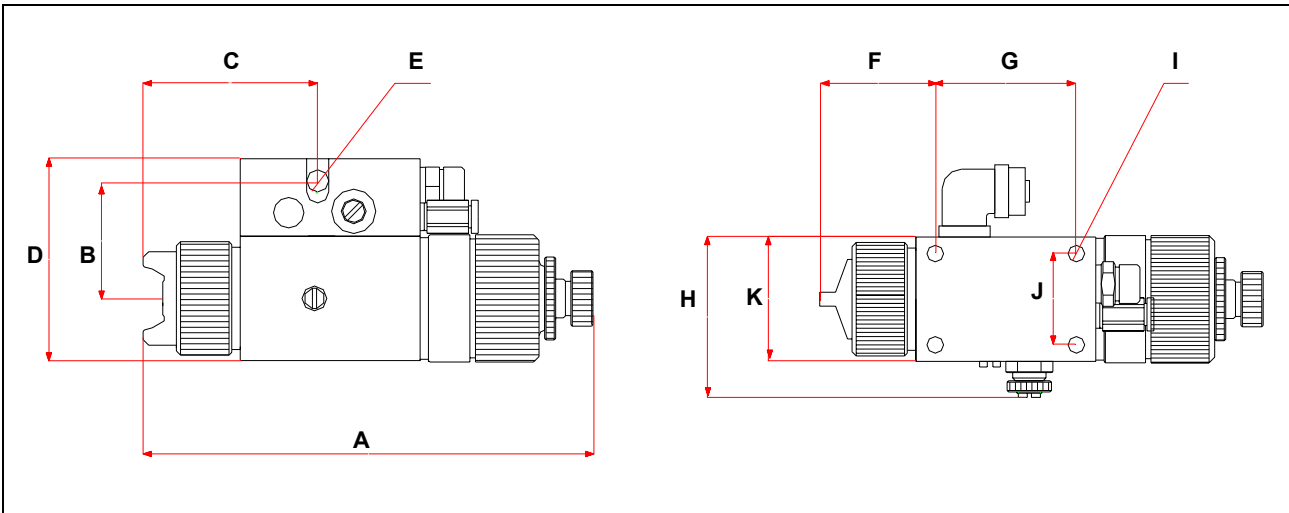


For the gun, model A 26 HTi, the base is fitted with two air needles : one for the fanned air outlet adjustment (AE → fan width adjustment), the other one for the center air adjustment (AC → spraying fineness adjustment, according to the the gun fluid output).

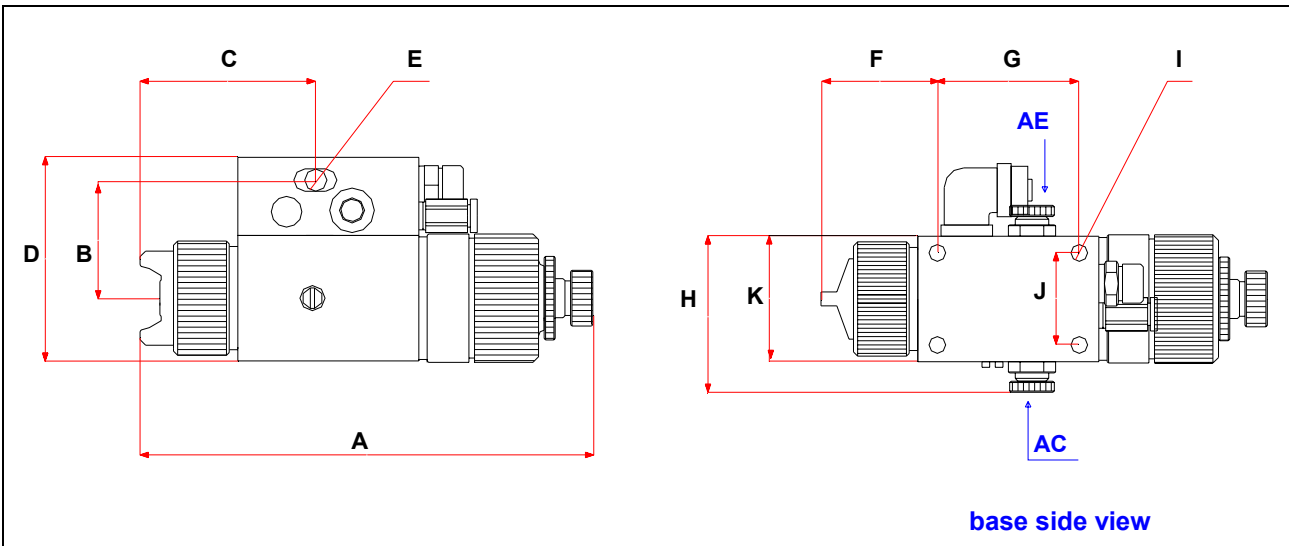
▪ **DIMENSIONS**

Dimensions	Ind.	A	B	C	D	E	F	G	H	I	J	K
mm	163	42,5	65	73	Ø 8	42	51	58	Ø 6	33	45	
Inches	6.4	1.7	2.6	2.9	Ø 5/16	1.6	2	2.3	Ø 1/4	1.3	1.8	

A 25, A 25 LP, A 25 HTi guns



A 26 HTi guns



OUTPUTS AND PRESSURE

	Fluid output (cm ³ /mn)	Fan width (cm)	Air output (m ³ /h)
A 25 - 9 Z 3	200	34	29
A 25 LP - 9 LP 3	200	32	22
A 25 HTi - 9 H 3	200	34	28
A 26 HTi - 9H3	200	34	28

Fluid viscosity : 20 s CA n° 4 (= 40 centipoises)
 Air pressure = 2,5 bar / 36 psi (A 25 and A 25 LP)
 Air pressure = 2 bar / 29 psi (A 25 HTi and A 26 HTi)

Nota : for the HTi guns with the aircap, model H 3 , a pressure of 1.6 bar / 23 psi upstream of the gun corresponds to a pressure of 0.7 bar / 10 psi at the gun aircap.

2. DISASSEMBLY - REASSEMBLY



WARNING :

Before any intervention on the spray gun, shut off the compressed air supply and depressurize the systems by controlling the opening of the spray gun.

■ CHANGING THE SPRAY GUN

Shut off the air and product feeds to the gun.

Depressurize the circuits.

Remove the 4 screws (ind. 27).

Take out the gun.

Fit the replacement gun and change the seals (ind. 28 and 29).

Re-fit the 4 screws (ind. 27).

■ CARTRIDGE AND NEEDLE

Unscrew the cylinder (ind. 22) - (paying attention to the springs (ind. 20 and 21).

Hold the entire needle and piston assembly (ind. 10 and 16) and pull it towards the back.

Remove the aircap (ind. 1) and the nozzle (ind. 6).

Loosen the screw (ind. 25) by two turns (fluid leakage detector).

Insert one of the screws (ind. 27) at the back in place of the needle and push or tap it until the cartridge (ind. 13) comes out at the front.

Clean everything well with solvent and then blow it out with air.

Push in the new cartridge from the front.

- ➔ **IMPORTANT : with the head of the screw (Ind. 27), push the cartridge to the back. Tap it lightly if necessary.**

Re-tighten the fluid leakage detector (Ind. 25).

Re-fit the needle and piston assembly (Ind. 10 and 16).

Fit the springs (Ind. 20 and 21).

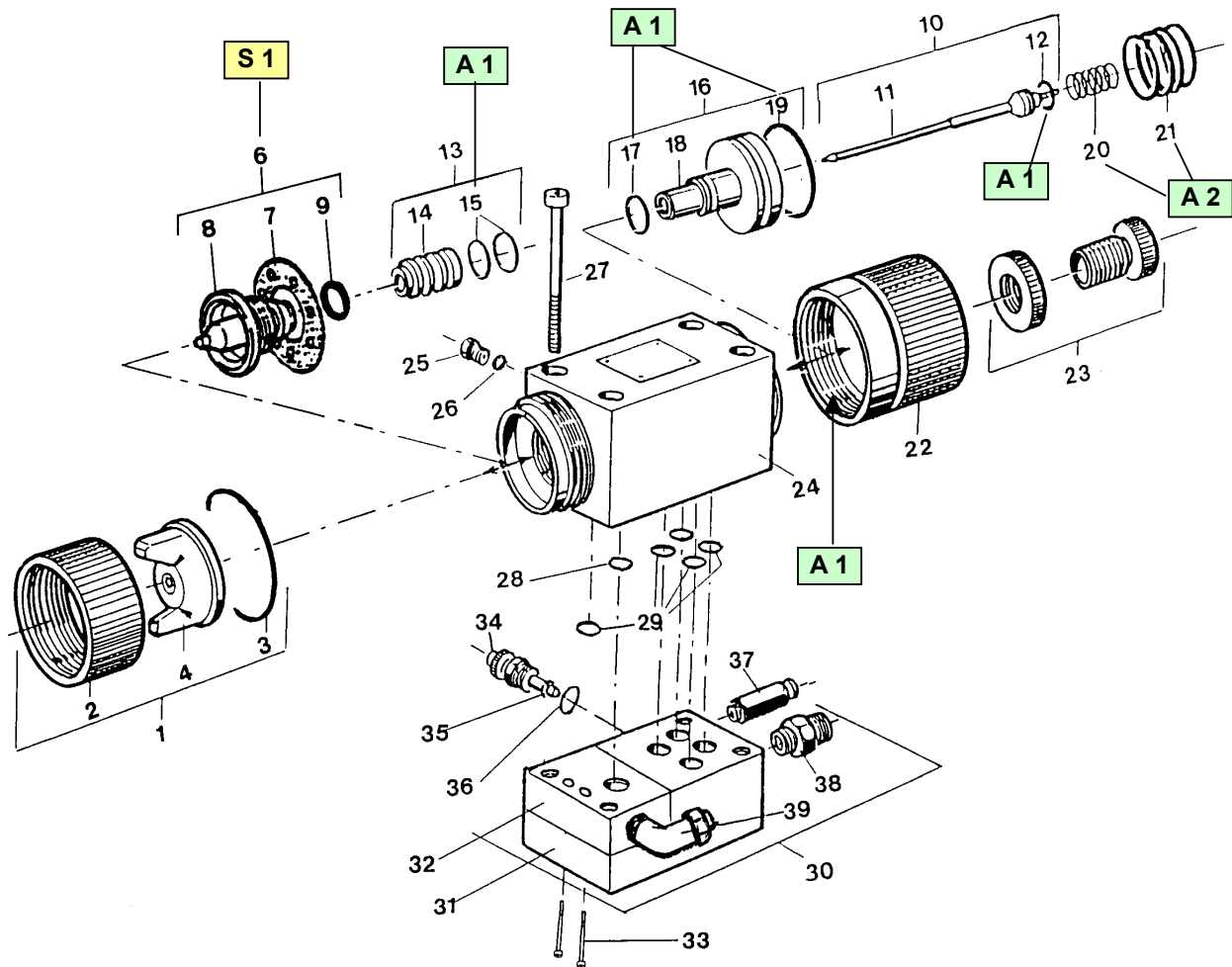
Screw on the cylinder (ind. 22).

Re-fit the nozzle (Ind. 6) and the aircap (Ind. 1), having unscrewed the needle adjustment knob (Ind. 23).

Before reassembling the different components :

- Clean the parts with the appropriate cleaning solvent by means of a brush.
- Install new seals after having lubricated them with PTFE grease.
- Install new parts if necessary.

3. ASSEMBLY INSTRUCTIONS



Index	Instructions	Description	Part number
A 1	PTFE grease	"TECHNILUB" grease (10 ml)	560.440.101
A 2	Graphite grease	Graphite grease (100 g)	560.420.005
S 1	Screwing torque A 25, A 25 LP :	18 Nm / 13.28 ft/lbs	
	A 25 HTi, A 26 HTi :	11 - 13 Nm / 8.1 - 9.6 ft/lbs	