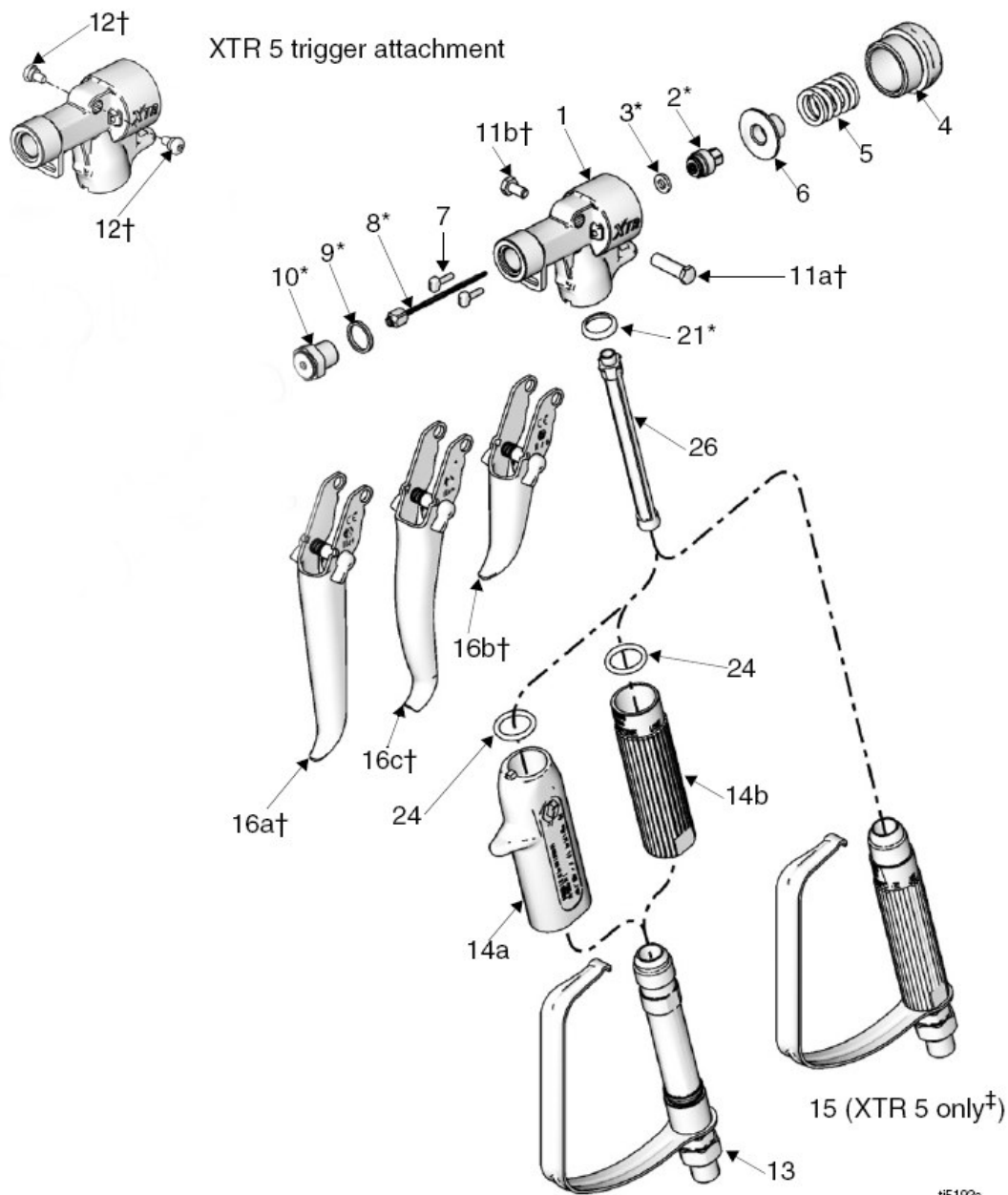


XTR 5 og 7



Parts

Ref	Part	Description	Qty
1	15J771	BODY, gun, aluminum, (XTR 5 only)	1
	15E178	BODY, gun, sst (XTR 7 only)	1
2*	245881	SEAL, retainer assembly	1
3*	n/a	GASKET (kit 248837 only, not sold separately)	1
4	15K000	CAP, end (XTR 5 only)	1
	15A864	CAP, end (XTR 7 only)	1
5	117350	SPRING,	1
6	15E088	RETAINER, needle	1
7	15E085	PIN, actuator	2
8*	248591	NEEDLE	1
9*	156766	GASKET	1
10*	245858	SEAT, valve	1
11a†	192272	PIN, pivot (XTR 7 only)	1
11b†	203953	SCREW, cap, hex-hd; 10-24 x 3/8 in. (10 mm) [XTR7 only]	1
12†	117602	SCREW, shoulder, pan hd; 8-32 x 5/16 in. (8 mm) [XTR 5 only]	2
13	248952	HANDLE, includes trigger guard, swivel, tube, and o-ring; see Tables 1 and 2	1
14a	276997	HANDLE SLEEVE, insulated, (see Tables 1 and 2)	1
14b	15E083	HANDLE SLEEVE, 1 in. (25 mm), (see Tables 1 and 2)	1
15‡	255275	HANDLE, includes trigger guard, swivel, and tube, 1 in. (25 mm) OD, (XTR 5 only, see Table 2)	1
16a†	287449	TRIGGER KIT, also includes 11a, 11b, and 12, see Tables 1 and 2,	1
16b†	287450	TRIGGER KIT, also includes 11a, 11b, and 12, see Tables 1 and 2	1
16c†	287451	TRIGGER KIT, also includes 11a, 11b, and 12, see Tables 1 and 2	1
21*	179733	SEAL, sleeve	1
24	n/a	O-RING (kit 248952 only, not sold separately)	1
26	287032	FILTER, 60 mesh, included with gun	1
	287034	FILTER, 60 and 100 mesh combo	1
29▲	222385	TAG, warning (not shown)	1
36*	194744	TOOL, repair, packing	1

* Parts included in Repair Kit 248837, purchased separately.

† Parts included in Trigger Kits 287449 (16a), 287450 (16b), and 287451 (16c), purchased separately.

‡ **NOTE:** Handle is not pressure rated for use with the XTR 7. For an XTR 7, order handle 13 and sleeve 14a or 14b depending on your model (see Table 1).

Table 1: XTR 7 Models

XTR 7 Gun Part No.	Reference Numbers							
	13	14a	14b	16a	16b	16c	19	20
XTR700	✓		✓	✓			✓	
XTR701	✓		✓	✓				
XTR702	✓	✓				✓	✓	✓
XTR703	✓	✓			✓		✓	✓
XTR704	✓		✓	✓			✓	✓
XTR705	✓		✓		✓		✓	✓

Table 2: XTR 5 Models

XTR 5 Gun Part No.	Reference Numbers								
	13	14a	14b	15	16a	16b	16c	19	20
XTR500				✓	✓			✓	
XTR501				✓	✓				
XTR502	✓	✓					✓	✓	✓
XTR503	✓	✓				✓		✓	✓
XTR504				✓	✓			✓	✓
XTR505				✓		✓		✓	✓