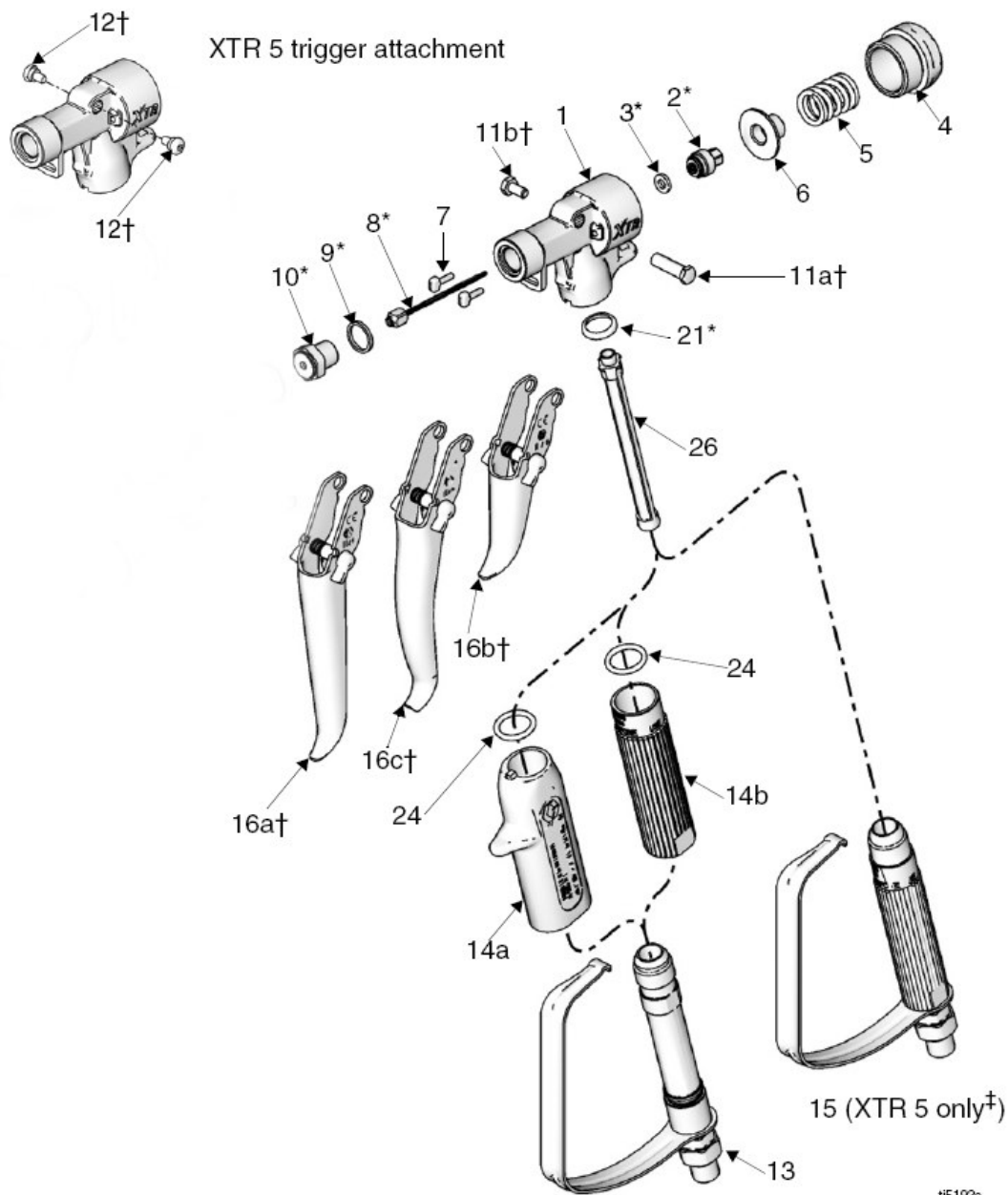


# XTR 5 og 7



**Parts**

Ref	Part	Description	Qty
1	15J771	BODY, gun, aluminum, (XTR 5 only)	1
	15E178	BODY, gun, sst (XTR 7 only)	1
2*	245881	SEAL, retainer assembly	1
3*	n/a	GASKET (kit 248837 only, not sold separately)	1
4	15K000	CAP, end (XTR 5 only)	1
	15A864	CAP, end (XTR 7 only)	1
5	117350	SPRING,	1
6	15E088	RETAINER, needle	1
7	15E085	PIN, actuator	2
8*	248591	NEEDLE	1
9*	156766	GASKET	1
10*	245858	SEAT, valve	1
11a†	192272	PIN, pivot (XTR 7 only)	1
11b†	203953	SCREW, cap, hex-hd; 10-24 x 3/8 in. (10 mm) [XTR7 only]	1
12†	117602	SCREW, shoulder, pan hd; 8-32 x 5/16 in. (8 mm) [XTR 5 only]	2
13	248952	HANDLE, includes trigger guard, swivel, tube, and o-ring; see Tables 1 and 2	1
14a	276997	HANDLE SLEEVE, insulated, (see Tables 1 and 2)	1
14b	15E083	HANDLE SLEEVE, 1 in. (25 mm), (see Tables 1 and 2)	1
15‡	255275	HANDLE, includes trigger guard, swivel, and tube, 1 in. (25 mm) OD, (XTR 5 only, see Table 2)	1
16a†	287449	TRIGGER KIT, also includes 11a, 11b, and 12, see Tables 1 and 2,	1
16b†	287450	TRIGGER KIT, also includes 11a, 11b, and 12, see Tables 1 and 2	1
16c†	287451	TRIGGER KIT, also includes 11a, 11b, and 12, see Tables 1 and 2	1
21*	179733	SEAL, sleeve	1
24	n/a	O-RING (kit 248952 only, not sold separately)	1
26	287032	FILTER, 60 mesh, included with gun	1
	287034	FILTER, 60 and 100 mesh combo	1
29▲	222385	TAG, warning (not shown)	1
36*	194744	TOOL, repair, packing	1

\* Parts included in Repair Kit 248837, purchased separately.

† Parts included in Trigger Kits 287449 (16a), 287450 (16b), and 287451 (16c), purchased separately.

‡ **NOTE:** Handle is not pressure rated for use with the XTR 7. For an XTR 7, order handle 13 and sleeve 14a or 14b depending on your model (see Table 1).

**Table 1: XTR 7 Models**

XTR 7 Gun Part No.	Reference Numbers							
	13	14a	14b	16a	16b	16c	19	20
XTR700	✓		✓	✓			✓	
XTR701	✓		✓	✓				
XTR702	✓	✓				✓	✓	✓
XTR703	✓	✓			✓		✓	✓
XTR704	✓		✓	✓			✓	✓
XTR705	✓		✓		✓		✓	✓

**Table 2: XTR 5 Models**

XTR 5 Gun Part No.	Reference Numbers								
	13	14a	14b	15	16a	16b	16c	19	20
XTR500				✓	✓			✓	
XTR501				✓	✓				
XTR502	✓	✓					✓	✓	✓
XTR503	✓	✓				✓		✓	✓
XTR504				✓	✓			✓	✓
XTR505				✓		✓		✓	✓