

**Elcometer** blast machines are available in a range of easy-to-order kits to get you up and running as quickly and easily as possible.

### Blast Kit 1



- Elcometer Abrasive Blast Machine
- RCV 4000+ Remote Control Valve with Silencer, Exhaust & Safety Petcock
- 20m<sup>1</sup> (65.6ft) Pneumatic Control Hose with Deadman's Handle (DMHII)
- Air Manifold
- Choke Valve and Pusher Line
- Abrasive Metering Valve & Metal Pot Coupling
- Hard Wearing Mixer T<sup>2</sup>
- Pressure Test Certificate
- Moisture Separator

### Blast Kit 2



All of Blast Kit 1 plus:

- 20m<sup>1</sup> (65.6ft) 1 1/4" (32mm) ID Blast Hose Assembly complete with Nylon Coupling and Nylon Nozzle Holder

### Personal Protection Kits

**Elcometer** offers a full range of personal protection & operator safety equipment including blast helmets, blast suits, capes and gloves, breathe air filters and breathe air hose.



<sup>1</sup> 10m (32.8ft) for Elcometer 1020 variants

<sup>2</sup> When fitted with a GV & AGV Media Valve



*“Greater pressure at the nozzle lets you work faster as every 1psi (0.7bar) above 100psi (7bar) equals 1.5% productivity increase.”*

## MAXIMISE UP TIME

When you are not blasting you are not earning, that's why Elcometer blast machines are engineered to **work harder, last longer and be faster to maintain.**

## ■ Quick and Easy

Whilst Elcometer pop up valves come with reinforced metal guards so that they last longer, when they need to be replaced you can do so quickly and easily thanks to the large access doorway which is wide enough for both of your arms. As each door comes with an ElcoFit™ wraparound sealing gasket, you don't even have to worry about gasket alignment.



## ■ Maintenance in Minutes

Maintenance is always required to prolong the service life of your blast machine. To minimise your downtime, the remote control valve, exhaust, silencer and moisture separator can be quickly swapped out in one assembly by undoing just two union joints. So whilst the assembly is being serviced, you can carry on blasting.



## ■ Tough T's

The Elcometer Mixer T is made from ultra-hard wearing machined steel so that they last longer and, when they have started to wear out, just rotate them by 180° to double their service life.

Each Exhaust T is fitted with a sacrificial wearplate nut, replaceable in seconds, saving you time and money.



## ■ Extend Your Lifetime

Unlike other media valves, Elcometer GV and AGV abrasive metering valves are fitted with a replaceable elcoTOUGH™ rubber valve liner which protects and prolongs the lifetime of the valve itself.

Integrated scales on the valves clearly indicate the valve setting and tells you when you need to change the liner, so you don't have to guess, or open up the valve to check.



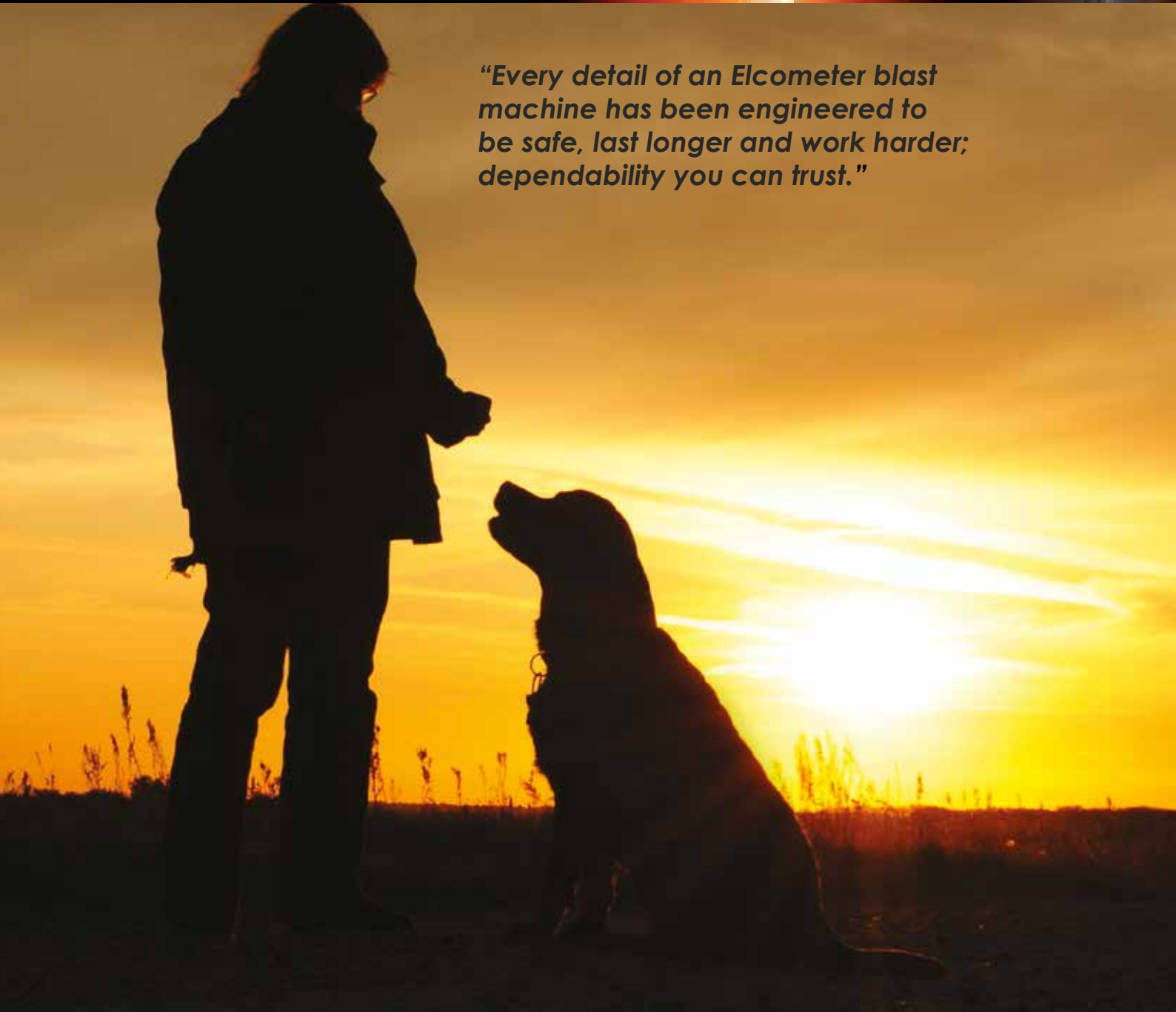
***Each elcoTOUGH™ liner can last more than 3 times longer than other rubber liners and can be rapidly replaced without the need to remove the valve from the machine.***



New elcoTOUGH™ Valve Liner



elcoTOUGH™ Valve Liner after 1665 hours using copper slag at 8bar (116psi)



*“Every detail of an Elcometer blast machine has been engineered to be safe, last longer and work harder; dependability you can trust.”*

## **SAFE & RELIABLE**

Rugged, reliable and easy to use, Elcometer blast machines & valves are supplied with a full 12 month warranty and are engineered & tested to be **incredibly efficient, durable and safe.**



## ■ Excellence Is Our Standard

Designed and manufactured at our purpose built production facility in Manchester, England, Elcometer blast machines are CE approved, fully tested and certified to International Standards PED 2014/68EU.



## ■ Built to Last

Manufactured out of heavy duty 6mm (1/4") steel with double weld seams and with a tough marine specification multi-coat anti-corrosion paint, Elcometer blast machines exceed CE/PED Standards to maximise their lifespan.



## ■ Putting You in Control

Elcometer's state-of-the-art RCV4000 & RCV4000+ Remote Control Valves allow you to safely control the blast machine at the nozzle. The high flow exhaust manifold allows air to quickly depressurise the blast machine.



## ■ Emergency Shut Down

Every Elcometer blast machine is fitted with a large and easy to reach safety petcock as standard. In an emergency it will isolate the deadman's handle circuit and depressurise the blast machine quickly and safely.



## ■ Peace of Mind

Pressure relief valves must be incorporated into the system to meet global safety standards. Elcometer offer certified pressure relief valves that can be easily fitted to RCV4000+ remote control valves, automatically discharging the compressed air in the blast machine upon reaching the release pressure.





Productivity is a function of pressure and air flow.

*“For every psi at the nozzle above 100psi (7bar) you get a 1.5% increase in productivity.”*



## ENHANCE YOUR PERFORMANCE

Optimising the volume, speed and pressure of air to the nozzle results in greater blasting efficiency. Higher pressure and speed of air at the nozzle will also allow use of a larger nozzle size, resulting in faster blast area coverage, allowing you to cover more in less time.

Operating at more efficient blast pressures will also result in less abrasive usage thus **saving money and clean up time!**

### ■ **Minimise Your Pressure Loss**

The design of your blast machine together with your blast hose diameter, length, age, wear and quality can effect the pressure at the nozzle.

This is why we manufacture blast machines which have a maximum working pressure of either 12 or 15bar (174 or 217psi), and have been engineered for minimal pressure loss - so that you will always have the nozzle pressure you need to maximise your productivity.



### ■ **Maximise Your Cubic Air Flow Per Minute**

With an internal pipe diameter of 1½" (38mm) across our blast machines we have optimised the volumetric flow rate of air through the system every minute so that you can select a larger nozzle diameter, allowing you to blast more in less time.



### ■ **Blast for Longer**

Elcometer blast machines have a maximum working pressure of 12 or 15bar (174 or 217psi) allowing you to maintain the nozzle pressure over significantly longer lengths of hose, even as it wears.

### ■ **Reduce Your Media Costs**

Elcometer blast machines are designed to deliver the optimum pressure and flow rate at the nozzle, allowing you to use less abrasive to blast the same area to the same profile, saving you money.

Our abrasive media valves come with fingertip adjustment so that you can precisely control the media flow, even whilst blasting.



### ■ **Reduce Your Maintenance**

Elcometer's blast machines are engineered to be extremely durable so that parts last longer. Forcing abrasive through a high pressure system will, however, always create wear and tear so we have designed our machines to be easy and fast to maintain so that you can maximise your blast time.

### ■ **Be In Control**

Designed for precision control and minimal air flow loss, the Elcometer RCV4000 & RCV4000+ Remote Control Valves allows you to safely control a blast machine at the nozzle, fast.





*“Greater pressure at the nozzle lets you work faster as every 1psi (0.07bar) above 100psi (7bar) equals 1.5% productivity increase.”*

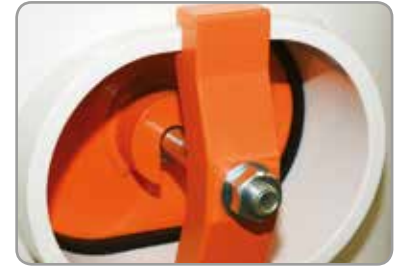
## MAXIMISE UP TIME

When you are not blasting you are not earning, that’s why Elcometer blast machines are engineered to **work harder, last longer and be faster to maintain.**



## ■ Quick and Easy

Whilst Elcometer pop up valves come with reinforced metal guards so that they last longer, when they need to be replaced you can do so quickly and easily thanks to the large access doorway which is wide enough for both of your arms. As each door comes with an ElcoFit™ wraparound sealing gasket, you don't even have to worry about gasket alignment.



## ■ Maintenance in Minutes

Maintenance is always required to prolong the service life of your blast machine. To minimise your downtime, the remote control valve, exhaust, silencer and moisture separator can be quickly swapped out in one assembly by undoing just two union joints. So whilst the assembly is being serviced, you can carry on blasting.



## ■ Tough T's

The Elcometer Mixer T is made from ultra-hard wearing machined steel so that they last longer and, when they have started to wear out, just rotate them by 180° to double their service life.

Each Exhaust T is fitted with a sacrificial wearplate nut, replaceable in seconds, saving you time and money.



## ■ Extend Your Lifetime

Unlike other media valves, Elcometer GV and AGV abrasive metering valves are fitted with a replaceable elcoTOUGH™ rubber valve liner which protects and prolongs the lifetime of the valve itself.

Integrated scales on the valves clearly indicate the valve setting and tells you when you need to change the liner, so you don't have to guess, or open up the valve to check.



***Each elcoTOUGH™ liner can last more than 3 times longer than other rubber liners and can be rapidly replaced without the need to remove the valve from the machine.***

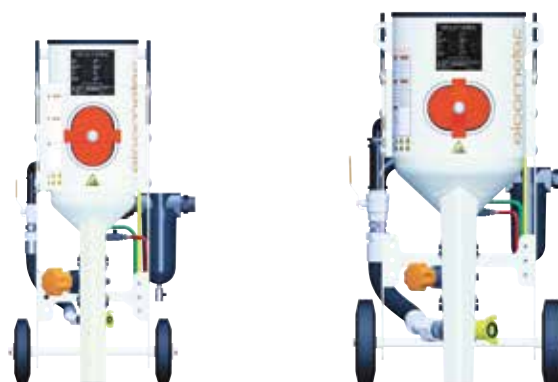


New elcoTOUGH™ Valve Liner

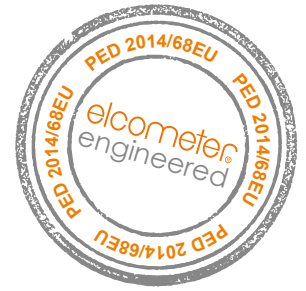


elcoTOUGH™ Valve Liner after 1665 hours using copper slag at 8bar (116psi)

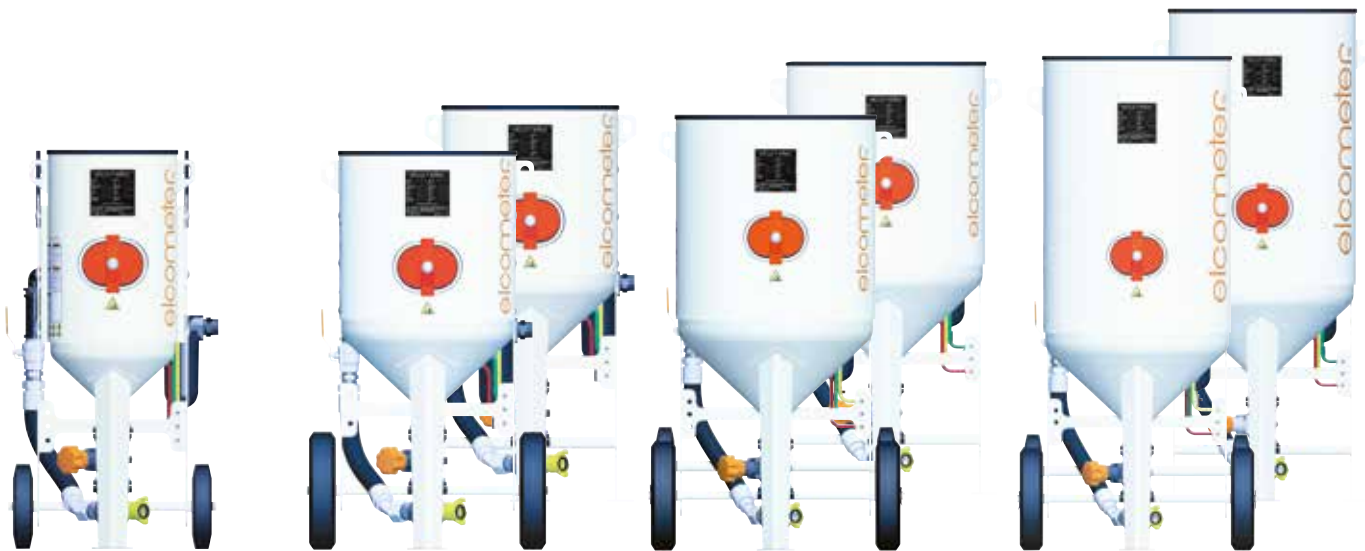
Whether you are blasting at a dockyard or in a blast room, **Elcometer offers a range of blast machines**, from 20 up to 285 litres (0.7 - 10.06cu ft), available with **12bar (174psi) working pressure** to maximise productivity.



	Options	Elcometer 1020	Elcometer 1440
<b>Capacity</b>	Volume	20 litres (0.70cu ft)	40 litres (1.41cu ft)
	Garnet Grit	47kg (102lbs)	94kg (206lbs)
	Steel Shot	88kg (193lbs)	176kg (388lbs)
<b>Model Options</b>	Portable	■	■
	Static		
<b>Valve Options</b>	FV/MFV: Flat Valve/ Mini Flat Valve GV/MGV: General Valve/ Mini General Valve AGV: Automatic General Valve	MFV MGV	FV GV AGV
<b>Dimensions</b>	Pot Diameter	254mm (10")	356mm (14")
	Height	880mm (35")	1015mm (40")
	Width	565mm (22")	615mm (24")
	Depth	562mm (22")	714mm (28")
	Weight	70kg (154lbs)	95kg (209lbs)



**Elcometer** standard blast machines are **CE approved** and fully tested and certified to **PED 2014/68EU** with a maximum working pressure of 12bar (174psi).



Elcometer 1460	Elcometer 20100	Elcometer 24200	Elcometer 24285
60 litres (2.11cu ft)	100 litres (3.53cu ft)	200 litres (7.06cu ft)	285 litres (10.06cu ft)
140kg (308lbs)	234kg (515lbs)	468kg (1031lbs)	667kg (1469lbs)
264kg (580lbs)	440kg (971lbs)	880kg (1942lbs)	1254kg (2767lbs)
■	■	■	■
	■	■	■
FV GV AGV	FV GV AGV	FV GV AGV	FV GV AGV
356mm (14")	508mm (20")	610mm (24")	610mm (24")
1165mm (46")	1175mm (46")	1380mm (54")	1665mm (66")
615mm (24")	704mm (28")	794mm (31")	794mm (31")
714mm (28")	865mm (34")	1109mm (44")	1109mm (44")
107kg (236lbs)	153kg (337 lbs)	205kg (452lbs)	231kg (509lbs)

**Elcometer 20100**

**100 litre**

**3.53cu ft**

The **Elcometer 20100** Abrasive Blast Machine is ideal for mobile contractors requiring continuous high production blasting.

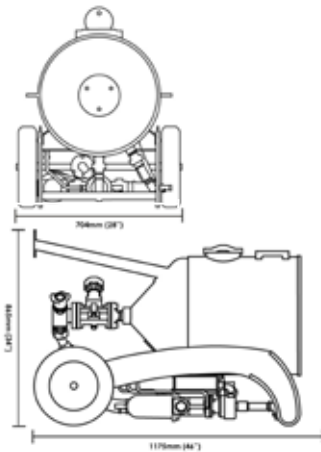
Ideal for continuous blasting applications

Also available as a static machine, ideal for truck mounting or fixing in a blast room




Available with a range of media valves to suit your application

Heavy duty 6mm (1/4") construction

Easy & quick to service





Kit Selection				Part Numbers														
Elcometer Blast Machine Kits are available with:				Portable			Static											
				Kit 1	Kit 2	Kit 1	Kit 2	Kit 1	Kit 2									
Flat Valve (F)		General Media Valve (G)		Automatic General Valve (A)		M20100-FV1-B	M20100-GV1-B	M20100-AGV1-B	M20100-FV2-B	M20100-GV2-B	M20100-AGV2-B	M20100S-FV1-B	M20100S-GV1-B	M20100S-AGV1-B	M20100S-FV2-B	M20100S-GV2-B	M20100S-AGV2-B	
20" 100 litre (508mm, 3.53cu ft) Abrasive Blast Machine				●	●	●	●	●	●	●	●	●	●	●	●	●	●	●
Pressure Test Certificate				●	●	●	●	●	●	●	●	●	●	●	●	●	●	●
RCV4000+ Remote Control Valve with Air Manifold, Exhaust & Silencer				●	●	●	●	●	●	●	●	●	●	●	●	●	●	●
20m (65.6ft) Pneumatic Control Hose & Deadman's Handle (DMHII)				●	●	●	●	●	●	●	●	●	●	●	●	●	●	●
Choke Valve and Pusher Line				●	●	●	●	●	●	●	●	●	●	●	●	●	●	●
Abrasive Metering Valve with Mixer T <sup>1</sup> and Metal Pot Coupling				F	G	A	F	G	A	F	G	A	F	G	A	F	G	A
Moisture Separator				●	●	●	●	●	●	●	●	●	●	●	●	●	●	●
20m 1¼" (65.6ft, 32mm) ID Blast Hose with Cast Iron Hose Couplings & Nylon Nozzle Holder							●	●	●							●	●	●
Externally Mounted Sieve and Lid							●	●	●							●	●	●

**Elcometer 20100 Abrasive Blast Machine Technical Specification**

<b>Capacity<sup>2</sup></b>		
Volume	100 litres	3.53cu ft
Garnet Grit	234kg	515lbs
Steel Shot	440kg	971lbs
Pot Diameter	508mm	20"
Height	1175mm	46"
Width	704mm	28"
Depth	865mm	34"
Weight	153kg	337lbs
Pipework Diameter	38mm	1½"
Maximum Working Pressure (WP) <sup>3</sup>	12bar	174psi
Operating Temperature Range	0 to 60°C	32 to 140°F

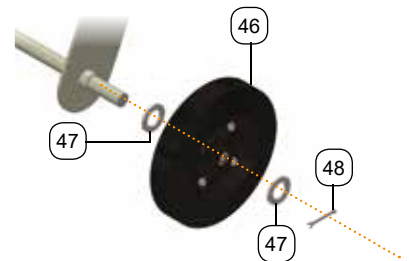
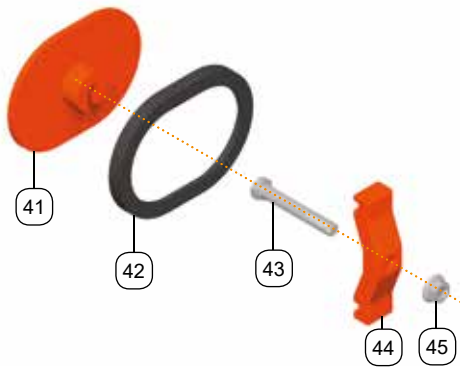
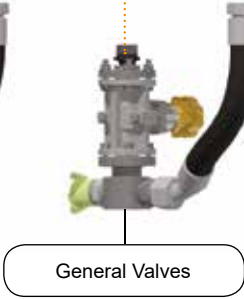
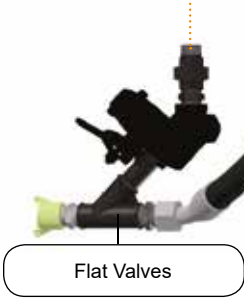
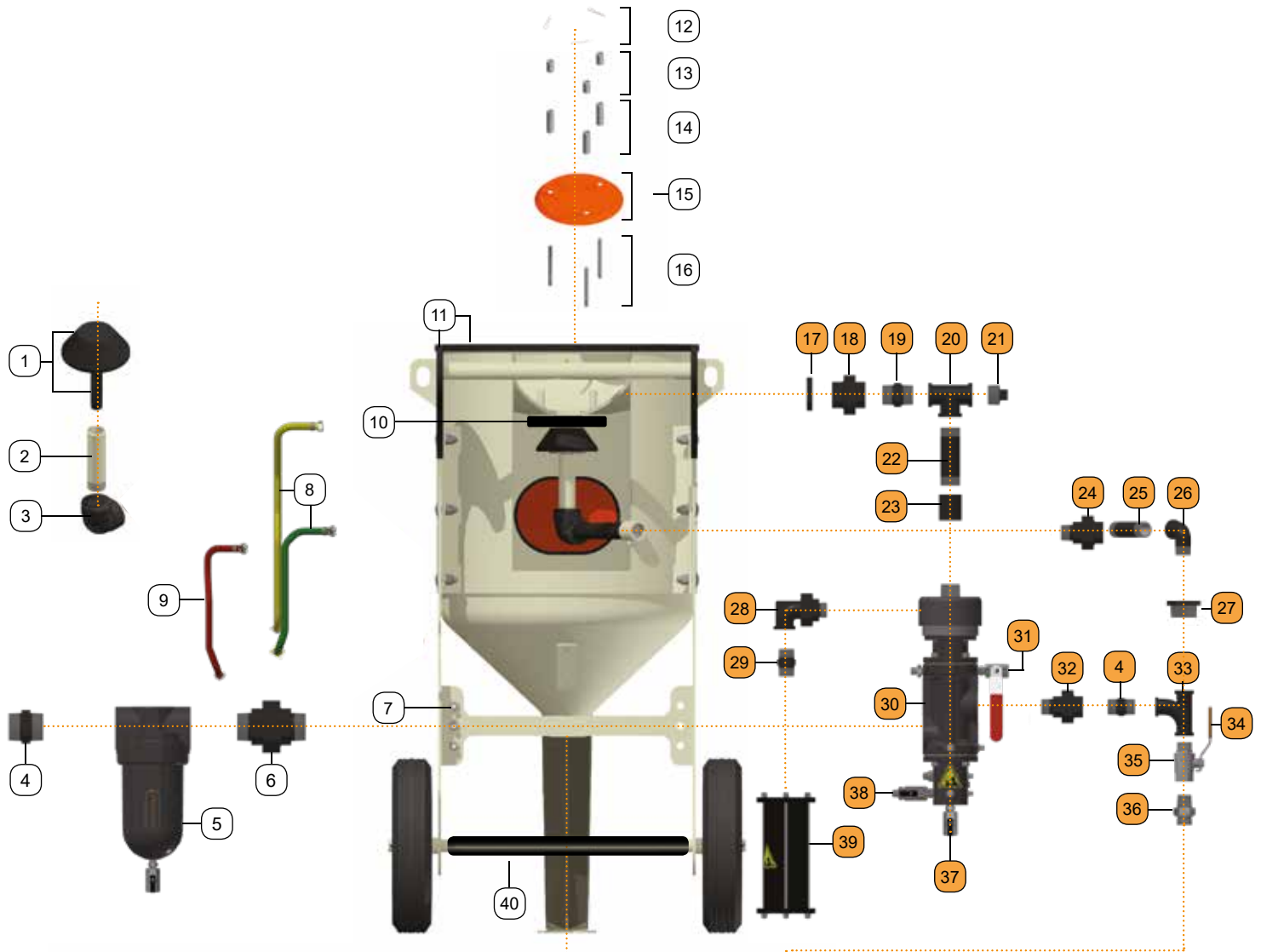


<sup>1</sup> Y Mixer for Flat Valve versions.

<sup>2</sup> Garnet & steel shot capacity figures based on typical media bulk density. Note that bulk density also varies according to media size and grade.

<sup>3</sup> Do not operate this abrasive blast machine unless there is an appropriate safety pressure relief valve within the pressurised system as a whole.

Elcometer 20100 Portable Abrasive Blast Machine



## Elcometer 20100 Portable Abrasive Blast Machine

## Spare Parts

Item	Part Number	Description
1	<b>MT28622</b>	Pop Up Valve
2	<b>MT28631-4</b>	1" (25mm) Pop Up Shaft for Elcometer 20100 (122mm) (4.8")
3	<b>MT29661</b>	1" (25mm) Female 90° Equal Elbow
4	<b>MT29663</b>	1½" (38mm) Hex Nipple
5	<b>MT28617</b>	Moisture Separator Assembly
6	<b>MT29662</b>	1½" (38mm) Male/Male Union Taper Seat
7	<b>MT29664</b>	¼" (6mm) Bulkhead Connector (x3)
8	<b>MT29716</b>	Elcometer 20100 Twin Airline Hose Assembly (Yellow & Green)
9	<b>MT29717</b>	Airline Assembly for Elcometer 20100 (Red)
10	<b>MT28627-5</b>	Pop Up Valve O-Ring (x5)
11	<b>MT29601</b>	Protective Edging Strip Kit (2.7m) (8.9ft)
12	<b>MT29667</b>	Spring Cotter Pin Type E (x3)
13	<b>MT29719</b>	Short Deflector Plate Spacer - 25mm (x3) (1")
14	<b>MT29720</b>	Long Deflector Plate Spacer - 51mm (x3) (2")
15	<b>MT29670</b>	Deflector Plate
16	<b>MT28629-3</b>	Deflector Plate Shaft - 82mm (3.2") (x3)
17	<b>MT29672</b>	1" (25mm) Backnut (Recessed)
18	<b>MT29673</b>	1" (25mm) Female/Female Union Taper Seat
19	<b>MT29679</b>	1" (25mm) Hex Nipple
20	<b>MT29680</b>	1" (25mm) Exhaust T Assembly (complete with MT29681 Exhaust Plug)
21	<b>MT29681</b>	1" (25mm) Exhaust Plug
22	<b>MT29718</b>	1" (25mm) Pipe for Elcometer 20100 (118mm) (4.6")
23	<b>MT29683</b>	1" (25mm) Socket
24	<b>MT29704</b>	1" (25mm) Male/Female Equal Union Taper Seat
25	<b>MT29682</b>	1" (25mm) Pipe for Elcometer 20100 (98mm) (3.9")
26	<b>MT29706</b>	1" (25mm) Male/Female 90° Elbow
27	<b>MT29707</b>	1" to 1½" Reducing Bush (25 x 38mm)
28	<b>MT28599</b>	¾" (19mm) Reinforced Union Elbow
29	<b>MT29688</b>	¾" (19mm) Hex Nipple
30	<b>MT29465</b>	Elcometer RCV4000+ Remote Control Valve
31	<b>MT29656</b>	Petcock Valve Assembly (Red Handle)
32	<b>MT30122-5</b>	1½" (38mm) Male/Female Equal Union Taper Seat
33	<b>MT29708</b>	1½" (38mm) Equal Pitcher T
34	<b>MT30094</b>	1½" (38mm) Choke Valve Handle
35	<b>MT29177</b>	1½" (38mm) Choke Valve Handle (includes MT30094 Choke Valve Handle)
36	<b>MT29710</b>	1½" (38mm) 60° Cone Male/Male Adaptor
37	<b>MT29658</b>	¼" (6mm) Ball Valve Assembly (Black Handle)
38	<b>MT29660</b>	¼" (6mm) Airline Ball Valve Assembly (Black Handle)
39	<b>MT28597</b>	Exhaust Silencer Assembly
40	<b>MT29692-3</b>	Protection Guard for Elcometer 20100
41	<b>MT28616</b>	Elcometer Inspection Hatch Door for Elcometer 20100
42	<b>MT28613</b>	ElcoFit™ Door Sealing Gasket
43	<b>MT29695</b>	Elcometer Inspection Door Hatch Bolt - M16 x 110mm
44	<b>MT28615</b>	Inspection Hatch Door Yoke
45	<b>MT29696</b>	M16 Hexagon Flanged Nut
46	<b>MT28637</b>	Ø350mm (13.8") Diameter Wheel (x1)
47	<b>MT29697</b>	Flat Washer (x8)
48	<b>MT29698</b>	Split Cotter Pin (x4)
-	<b>MT29490-4</b>	Elcometer RCV4000+ & Pipework Assembly Service Kit (contains items in orange)
-	<b>MT29180</b>	Elcometer Safety Label Kit