

Elcometer 141 Paint Inspection Gauge

The Elcometer 141 Paint Inspection Gauge is a useful method to determine the thickness of both single & multiple layer coatings.

Ideal for use on metallic & non-metallic substrates such as wood, glass and plastics.

- Large easy grip handle - makes cutting thick or hard coatings easy
- Internal cutter storage compartment
- x50 magnification microscope



STANDARDS:

AS 1580.108.2, ASTM D 4138-A, BS 3900-C5-5B, DIN 50986, ISO 2808-5B, ISO 2808-6B, JIS K 5600-1-7, NF T 30-123

Technical Specification

Part Number	Description	Certificate
A141---D	Elcometer 141 Paint Inspection Gauge	○
Scale Range	0 to 1.8mm (0 to 0.07")	
Scale Resolution	0.02mm (0.001")	
Dimensions (fitted to handle)	160 x 100 x 35mm (6.3 x 4 x 1.4")	
Weight (fitted to handle)	510g (1lb 2oz)	
Packing List	Elcometer 141 P.I.G, x50 microscope, 3 cutters, marker pen, hexagonal wrench, carry case and operating instructions	

Accessories

Part Number	Description	Cutting Angle	Measurement Range	Graticule Scale Factor	Certificate
T99915761-1	Tungsten Carbide Cutter No 1	45°	20 - 2000µm (1 - 80mils)	20µm (1mil)	○
T99915761-4	Tungsten Carbide Cutter No 4	26.6°	10 - 1000µm (0.5 - 35mils)	10µm (0.5mil)	○
T99915761-6	Tungsten Carbide Cutter No 6	5.7°	2 - 200µm (0.1 - 8mils)	2µm (0.1mil)	○

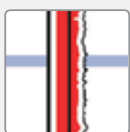
Using the Paint Inspection Gauge



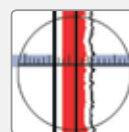
1. Take the coated product.



2. Using the supplied marker, draw a line across the coating.



3. Using the P.I.G, make a cut at right angles to the marker line, all the way down to the substrate.



4. Use the supplied microscope to count the number of graticule divisions across the coating layer & calculate the thickness value using the graticule scale factor.

○ Optional Calibration Certificate available.